

SETTING THE STANDARD

Changing Places

(BS8300: 2018)



S-Y-n-C
LIVING

INCLUSIVE SOLUTIONS

Sync Living have provided 'Changing Places' toilet facilities to a vast number of public buildings throughout Ireland. There are over 11 million people with limiting long-term illness, impairment or disability currently living in the UK only with over 2 million with profound disabilities who cannot use standard accessible toilets. 600,000 individuals in Ireland are registered as disabled.



WHY ARE 'CHANGING PLACES' LOCATIONS REQUIRED?

For many people using the toilet safely may be difficult but creating the correct facilities will enable more people to enjoy freedom and access your facilities.

The need for a specialist toilet and changing facilities will enable people with profound and multiple learning difficulties, their carers, assistants and families to enjoy days out to various locations.

WHERE SHOULD 'CHANGING PLACES' FACILITIES BE PROVIDED?

In locations and buildings where large numbers of people visit for several hours at a time including:

- Retail
- Transport Terminals
- Hospitality
- Cultural Centres
- Public Buildings
- Education
- Health Facilities
- Entertainment Venues



WHAT EQUIPMENT SHOULD 'CHANGING PLACES' FACILITIES PROVIDE?

Adequate space for the disabled person and up to two assistants (minimum 12 msq) and the correct equipment which may include:

- Grab Rails
- Automatic Toilet
- Raised Toilet (480mm)
- Height Adjustable Washbasin
- Hoists
- Height Adjustable Bench
- Privacy Screen
- Showering Facilities



HEIGHT ADJUSTABLE CHANGING BENCHES

Adult sized height adjustable changing benches can be either:

- 1) Wall mounted or
- 2) Mobile Units (manually or electrically operated)

There are advantages to both models so speak to one of our advisors to find out the best model for you.

Wall Mounted Features:

- 300mm - 900mm height range
- Weight capacity - 200kg
- Part stainless steel construction
- Durable non-rip high tension vinyl material
- Suitable for use in shower areas and wet rooms
- Protrudes just 220mm from wall when stowed



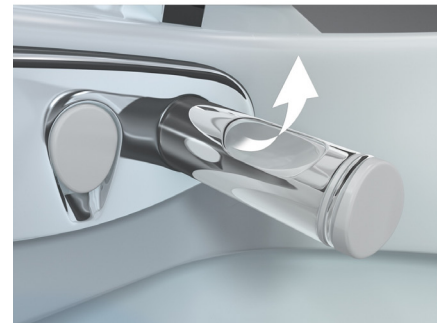
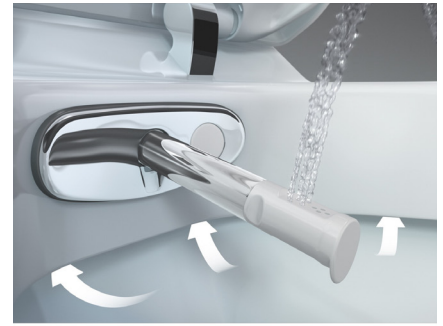
HEIGHT ADJUSTABLE WASH HAND BASIN

We have a choice of manual, powered or gas assisted models available.

It is recommended that the basin is installed 720-40mm above the floor. The washbasin should have clear knee space below the bowl, to allow a wheelchair user to comfortably use it.

Features:

- 450mm height range
- 150mm lever taps
- Pop up waste
- Built-in shaver/electric toothbrush socket
- Enclosed plumbing
- Anti-trap safety cut-out
- Space under unit allows superior wheelchair access
- Low voltage handset
- Battery backup
- Large mirror allowing user and carer to communicate



3 in 1

Flushing + Washing + Drying

AUTOMATIC TOILET

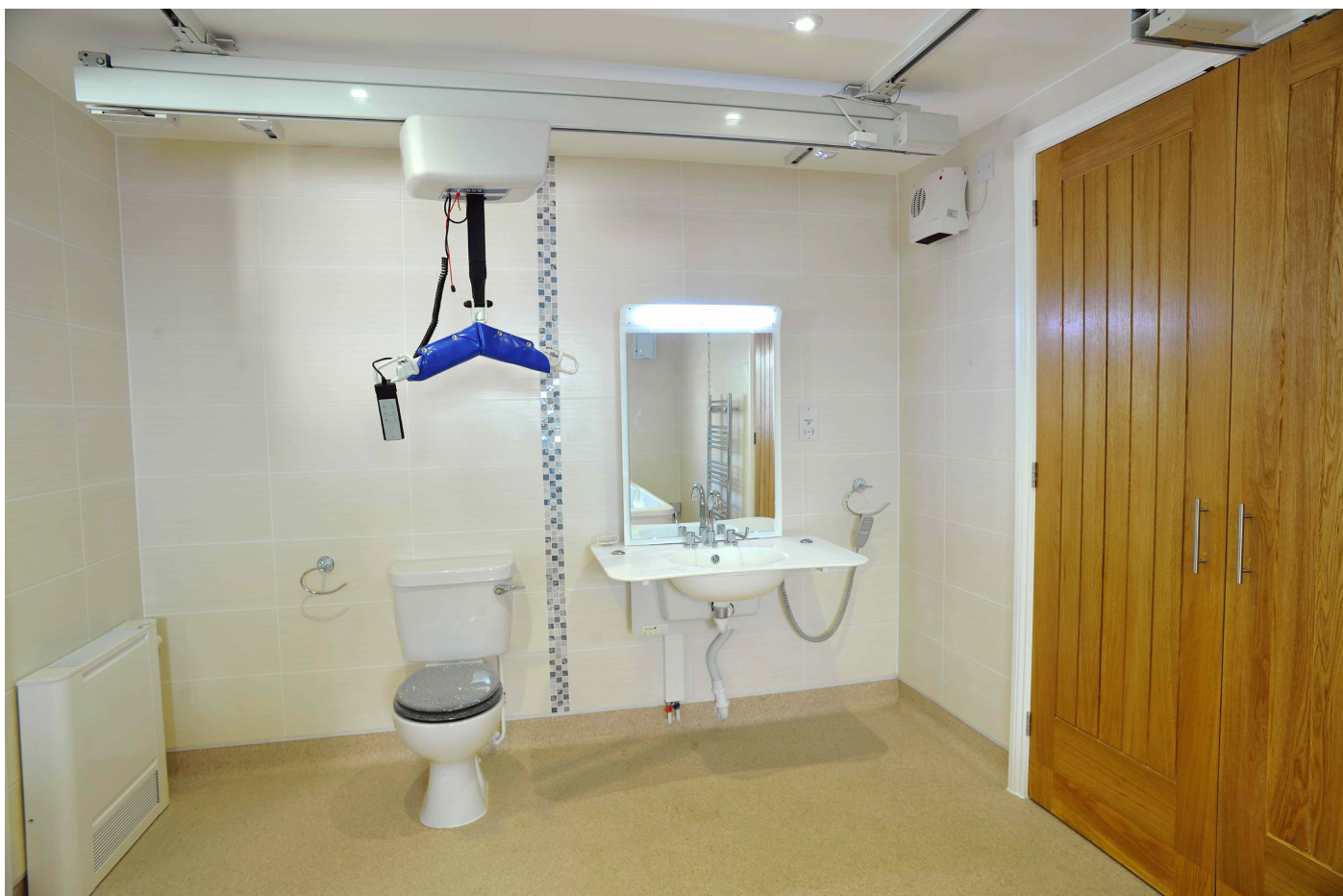
An Automatic Toilet is not a requirement but we would recommend it for extra independence.

A Changing Places toilet should be peninsular (at least a metre away from the walls on either side). This means there is space on both sides of the toilet, allowing wheelchair transfers or assistance from carers.

Features:

- 7 Levels of adjustable spray pressure
- Adjustable spray arm position
- Oscillating spray function
- Massage spray and Lady wash
- Warm-air dryer with adjustable temperature
- Odour extraction
- Soft-closing mechanism and soft-stop opening mechanism
- Remote control included
- Energy-saving mode
- User identification
- Dimensions - W420 x H430 x D615mm

S-Y-n-C
LIVING



CEILING TRACK HOIST

A hoist is an essential part of a Changing Places facility. A Ceiling track hoist provides the caregiver with increased access to the client making their job safer and making the transfer more comfortable for the client.

Features:

- Full room coverage with XY/H System
- Safe Working Load 200Kg
- Simple 2/4 Button operation
- Safe to use in wet conditions
- Quiet operations with soft start/stop for client comfort
- Emergency Stop
- It accommodates most designs of slings and lifting requirements



SUPPORT RAILS

Both wall-mounted vertical grab rails and drop-down support rails should be fixed to the wall either side of a peninsular toilet to offer support to people while transferring and while seated.

It is essential that grab rails, support-rail fixings and the structure on which they are fitted are strong enough to support the weight of a person.

Features:

Fixed and Fold Down Rails

Height Adjustable and Horizontally Adjustable

Various in a wide range of colours and styles



PRIVACY SCREEN

Privacy Screens are positioned between the toilet and remaining Changing Places facility giving privacy to the user once positioned and also the caregiver.

A Privacy Screen should be freestanding for ease of movement and retractable maximising floor space.

Features:

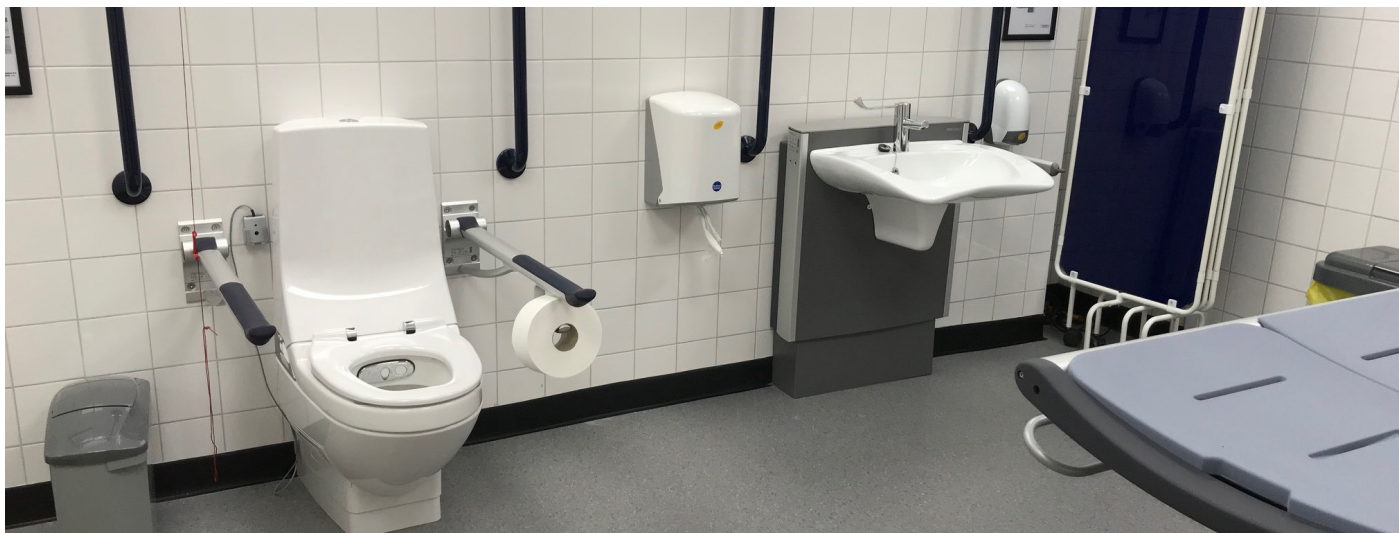
The modern alternative to traditional plastic curtains

Folding System for easy use

Easy clean

Fire retardant plastic panels

Fits epoxy coated white screen frames



CASE STUDY

IKEA DUBLIN PROJECT

PROJECT HIGHLIGHTS

LOCATION: **DUBLIN**

PROJECT TYPE: **CHANGING PLACES**

BUILDING TYPE: **RETAIL**

Leading home retailer IKEA is continuing to set the trend across Ireland and the UK by becoming an inclusive retail scheme. IKEA, Dublin was motivated to open a Changing Place's facility to ensure all of their customer's needs were catered for. The combination of space, correct equipment and it's position is key to the success of a Changing Places facility.

CLEVER DESIGN

To achieve the recommended 3m X 4m space, IKEA combined the previous baby changing facilities and disabled toilet together to provide a 'bigger and better' facility for their customers. Sync Living provided and installed the key equipment needed.



CASE STUDY

EBRINGTON BARRACKS PROJECT

PROJECT HIGHLIGHTS

LOCATION: **DERRY CITY**

PROJECT TYPE: **CHANGING PLACES**

BUILDING TYPE: **TOURISM / RETAIL**

The Ebrington Barracks opened in July 2017 to the public to help encourage people and families with disabilities to visit Derry City Centre for day trips. The facility was developed and funded fully by Glen Caring and is the first one in the Western Region.

TOP OF THE RANGE EQUIPMENT

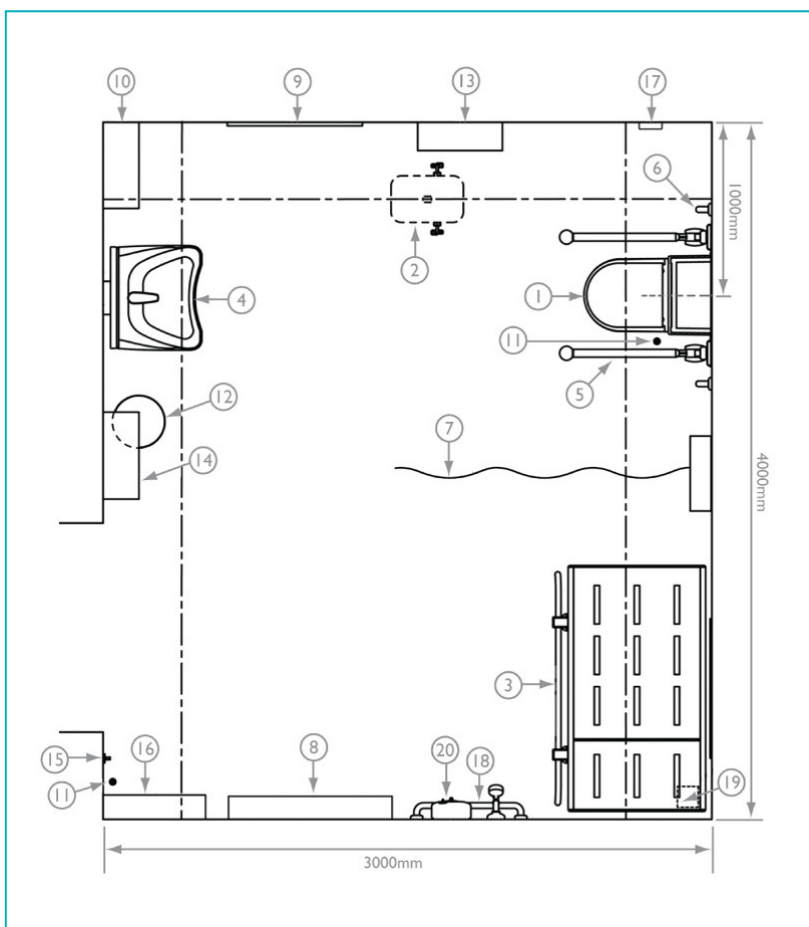
This luxury unit is designed to a high standard whilst being easy to use for both carers and the disabled person, and includes a fully automatic tracking hoist, height adjustable changing bench and wash hand basin, shower, automatic toilet and plenty of space.

All work space equipment can be folded to maximise working space for the users.

WHAT OPTION IS BEST SUITED TO YOUR BUSINESS

A 'Changing Places' toilet facility (minimum 12 msq) is suitable for educational facilities, commercial properties, transport hubs, entertainment venues and public buildings.

If space is a premium for your business such as small cafes, restaurants or cinemas we can still offer a number of suitable options for your disabled customers and their carers. Get in touch to find out more.



1. W/C
2. Ceiling Hoist and Track
3. Height adjustable adult-size changing bench
4. Wash Basin
5. Drop down rail
6. Vertical Grab Rail
7. Retractable Privacy curtain / screen
8. Wide Paper Roll Dispenser for use on the changing bench
9. Full-length mirror
10. Paper Towel Dispenser
11. Alarm Pull Cord
12. Waste Disposal Bin
13. Large sanitary disposal bin
14. Manually operated hand-dryer
15. Two clothes hooks, at 1051mm and 1400mm above the floor
16. Sanitary Towel Dispenser
17. Alarm Reset Button
18. Horizontal Grab Rail
19. Floor drain
20. Shower

Us + You in Sync

Contact Us

t: +44 (0) 289074 5333

e: sales@syncliving.co.uk

Nationwide, Ireland.

Visit syncliving.co.uk

S-Y-N-C
LIVING