



# Changing Places



BS8003-2:2018 compliant

**Planning & Design  
Technical Guide**

**S-Y-n-C**  
LIVING

# Setting the standard

Sync Living is a leading supplier of Changing Places all over Northern Ireland and Ireland. We provide equipment, expertise and installation.

We are proud to have installed Changing Places facilities for many leading organisations, who are pushing to bring inclusivity to all their customers.





# Changing Places

Changing Places are **fully accessible toilets and changing rooms**, that provide sufficient space and equipment for people who are not able to use the facilities independently.

They provide 12m<sup>2</sup> of floor space, and include equipment including a height adjustable changing bench, hoist, basin and toilet. This versatile equipment promotes well-being for both the user and their carers.

Changing Places facilities are designed to enhance the health, safety, comfort and dignity of someone who may need extra support and additional equipment during personal care tasks. Changing Places facilities also provide safety and support features for assistants.

Changing Places enable people with profound and multiple learning difficulties, their carers and families to enjoy days out to various locations. Without Changing Places, users often find themselves use the floor of public toilets to change on.





# What type of buildings need to install Changing Places?

If your building is **open to the public for several hours at a time**, you need a Changing Places facilities. Without these, many thousands of disabled people, their families and carers are denied equal access to your services.

Premises that require Changing Places include;

- Retail
- Hospitality
- Transport terminals
- Entertainment venues
- Public buildings
- Education
- Health facilities
- Cultural centre

**The Purple Pound**  
(the spending power of disabled households)  
is estimated at  
£274 billion per year  
in the UK



# Building Regulations Compliance



Northern Ireland  
Assembly

The **Northern Irish Assembly** have committed to make Changing Places Toilets mandatory in new public buildings from 2021. Shopping centres, supermarkets, sports and arts venues will be required to include at least one Changing Place.



**Rialtas na hÉireann**  
Government of Ireland

The **Government of Ireland** are under positive pressure to follow suit. Campaigning by the Changing Places Ireland group has been building momentum amongst the Department of Housing, Local Government and Heritage.

**Act now!** If you have a building that is open to the public, then talk to Sync Living today. Join those who have already made their premises accessible, including Belfast City Hall, IKEA, Victoria Square Shopping Centre and The SSE Arena.



# Changing Places Design

Changing Places go further than a standard 'Doc M' disabled toilet (*a toilet that meets Building Regulation Document M, the inclusive provision and requirements for facilities for disabled people*).

The following guide lists critical factors that must be considered for a Changing Places facility.

## Room layout: Critical factors

- Direct access from the door into the clear manoeuvring space.
- Minimum 12m<sup>2</sup> of floor space.
- Sufficient clear space to enable a wheelchair user and two assistants to manoeuvre around the room.
- Fixed and freestanding equipment positioned to maximise manoeuvring space.
- Easy direct transfer using hoist between clear manoeuvring space, WC and changing bench.
- Peninsular WC positioned to provide room for an assistant on either side of the WC.
- If installed, the shower unit and detachable shower head located close to changing bench.
- If installed with shower unit, floor drain positioned to prevent water flowing across room.
- Privacy curtain or screen positioned to shield the WC and to provide adequate space either side, but where it will not cause an obstruction when retracted.



12m<sup>2</sup> is roughly the same size as an average car parking space





# Key Equipment

# Height Adjustable Changing Table



Height adjustable changing tables lift users up from near floor level to a convenient height for washing and changing. Two options are available; **Wall mounted changing tables** and **freestanding changing tables**, which are mobile units that can be moved around the room.

The table should have a safe working load of approximately 200kg (31½ st), be a minimum of 1800mm in length and adjust from approximately 300mm to 1,000mm above the ground.

## Recommended Product

Our recommended wall-mounted solutions are the **Nivano Changing Table**, or the **Pressalit 3000 Shower Changing Table**. Product data sheets can be seen on **pages 25 & 26**.

Our recommended free-standing solutions are the **Therapy Hygiene Table**, or the **Shower Trolley**. Product data sheets can be seen on **pages 27 & 28**.







# Height Adjustable Wash Hand Basin

Height adjustable wash hand basins cater for a range of user heights; for both sitting and standing users. The washbasin should have clear knee space below the bowl, to allow a wheelchair user to comfortably use it. They are available in powered, manual or gas assisted models.

Wash basin taps should be easy to operate and adjust and to the TMV3 standard to prevent risk of scalding / injury. Temperature should not exceed 43 degrees Celsius. The height adjustment should be in the range of 580mm to 1,030mm above floor level and should ensure at least 700mm underneath for wheelchair access.

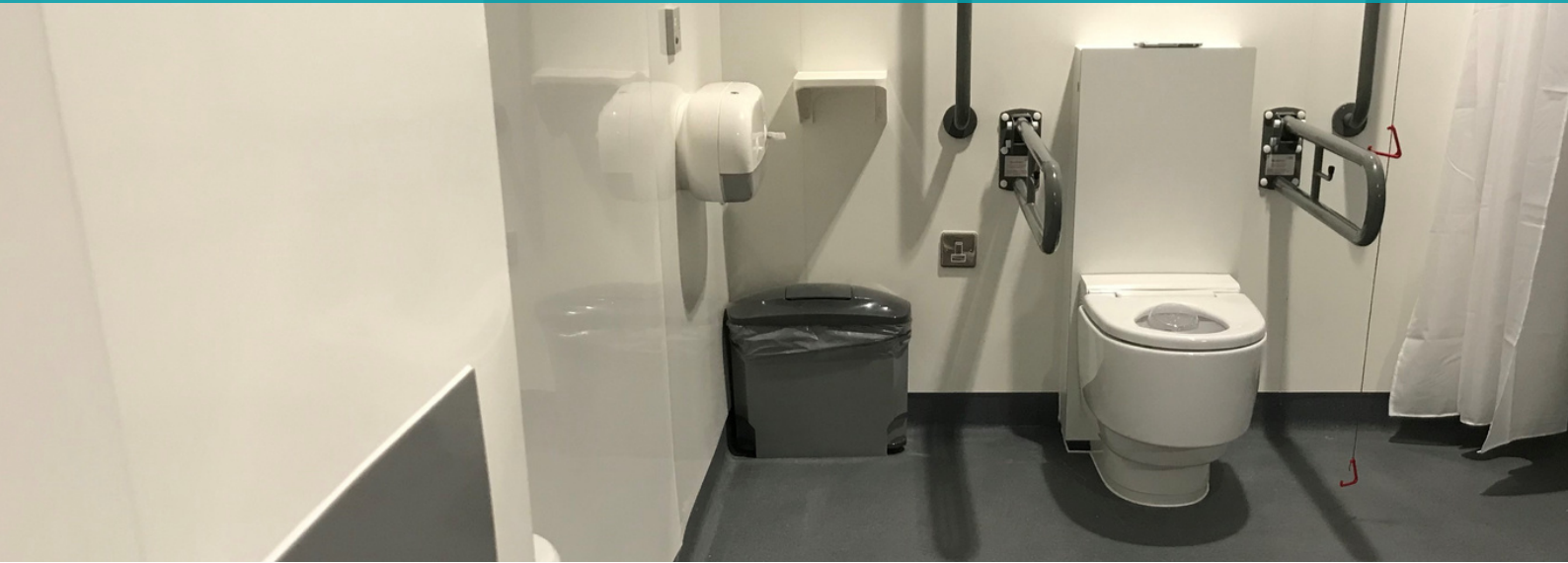
## Recommended Product

The **ABW6 Height Adjustable Wash Basin** product data sheet can be found on **page 29**.

The **R4950 Height Adjustable Wash Basin** product data sheet can be found on **page 30**.



# Automatic Toilet



Automatic toilets are not required, but we always recommend them for extra independence. Automatic toilets feature automatic flushing, warm water washing bidet, and warm air dryer.

A Changing Places toilet must be peninsular - meaning there is at least 1 metre of open space on either side. This means there is ample space on both sides of the toilet to allow the user to transfer from a wheelchair, and assistance from carers. The height of the toilet seat should be 480mm.

## Recommended Product

The **Geberit Mera Care Toilet** is our recommended solution. It is a high quality made product that is hygienic and simple to use. The Geberit Mera Care toilet product data sheet can be found on **page 31**.

We also supply **Comfort Height Toilets**. The product data sheet can be found on **page 32**.







# Ceiling Track Hoist

Ceiling tracks hoists are an essential part of a Changing Places facility. A ceiling track hoist enables a comfortable transfer from a wheelchair to the toilet or changing table. The hoist provides the caregiver with increased access to the user, making their job safer and reducing risk of injury.

Hoists should have a safe working load of 200kg (31½st) and the track system should give full room coverage in order to maximise the space. Note: Hoist slings are not expected to be provided- Slings are assessed to meet individuals needs and are intended for personal use only.

## Recommended Product

The **Freeway TransactiveXtra Ceiling Track Hoist** is our recommended solution. The low profile design is unobtrusive, yet offers abundant lifting height.

The product data sheet for the Freeway TransactiveXtra Ceiling Track Hoist can be found on **page 33**.





# Support Rails

Both wall-mounted vertical grab rails and drop-down support rails should be fixed to the wall either side of the peninsular toilet, to offer support to people while transferring and while seated.

Drop down support rails should be installed 320mm either side from the centre line of the WC to support transfers as well as while seated. The support arms should be with visually contrasting colours to the wall and placed at 680mm height.

It is essential that grab rails, support fixings and the structure on which they are fitted, are secure and strong enough to support the weight of a person.

## Recommended Product

**Lift and lock hinged support rails** are great for mounting near toilets. The product data sheet can be seen on **page 34**.

**Fixed stainless steel grab rails** are versatile, and can provide support right around Changing Places. The product data sheet can be seen on **page 35**.





# Privacy Screen

Privacy screens or curtains are required, and should be provided between the toilet and the rest of the room. This give privacy for people who, having been assisted into position on the toilet, are then able to use the toilet unaided. It also allows a carer to use the toilet in privacy themselves, if it is not appropriate for the person they are accompanying to be left alone outside the room.

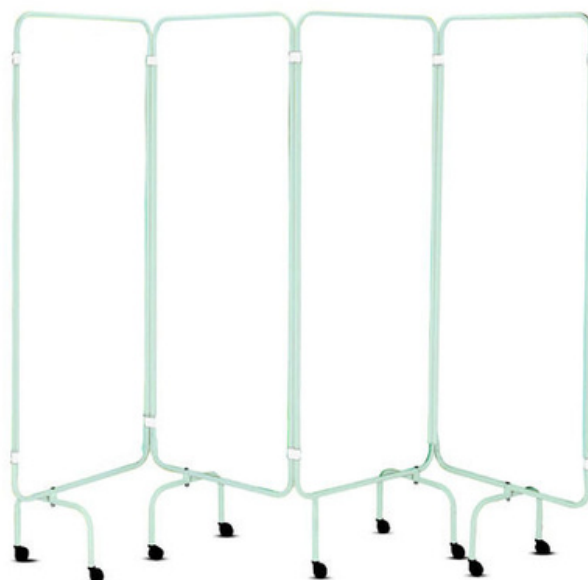
Privacy screens can either be wall mounted or mobile and should always be retractable. They should be positioned between the toilet and the rest of the room. Mobile privacy screens provide more versatility for repositioning.

## Recommended Product

These retractable privacy screens are easy to move and reposition.

The **mobile privacy screen** product data sheet can be found on **page 36**.

The **wall mounted privacy screen** product data sheet can be found on **page 37**.



## Shower

If a Changing Places toilet is being incorporated in a managed setting such as a leisure centre, a shower is often expected and can be very useful, however it is not a specific requirement for most Changing Places.

If including a shower, it should be positioned by the changing table or have a separate fold down seat area and the floor should be unobstructed. The **Triton Elina TMV3 Mixer Shower** data sheet can be found on **page 38**.



## Hand Dryer



A hot-air hand dryer should be provided on the door side of the washbasin, positioned with the underside 800mm to 1000mm above floor level.

Hand dryers that require users to put their hands into a limited space at the top of a hand dryer should not be used. Some 'ultrarapid' hand dryers can be too loud, causing discomfort for some users. The hand dryer data sheet can be found on **page 39**.

## Paper Towel Dispenser

A paper-towel dispenser should be wall mounted close to the washbasin, with the lower edge positioned 800mm to 1000mm above floor level. The dispenser should be a type that can be used easily with one hand.

This will help where hand-dryers are considered too loud or cause discomfort for some users. The paper towel dispenser data sheet is on **page 40**.



## Colostomy Bag Shelf

A shelf for colostomy bags 100mm to 150mm deep, and at least 400mm wide, should be fitted 950mm above floor level.

The shelf should be positioned where it will not obstruct use of the wall-mounted handrails or other equipment, but where it is within reach of a person using the WC. The data sheet can be found on **page 41**.



## Couch Roll Dispenser



A couch roll dispenser provides a hygienic cover for surfaces, that are then easily disposed of. The couch roll dispenser is wall mounted, with a durable construction that is lockable.

The couch roll dispenser data sheet can be found on **page 42**.

## Soap Dispenser

A soap dispenser should be wall mounted directly above the washbasin. It should be within reach of a person seated in a wheelchair, with the underside between 800mm - 1000mm above the floor.

The dispenser should be positioned to allow room for it to be operated when the washbasin is at its highest position, and should be easy to operate with one hand. The soap dispenser data sheet can be found on **page 43**.





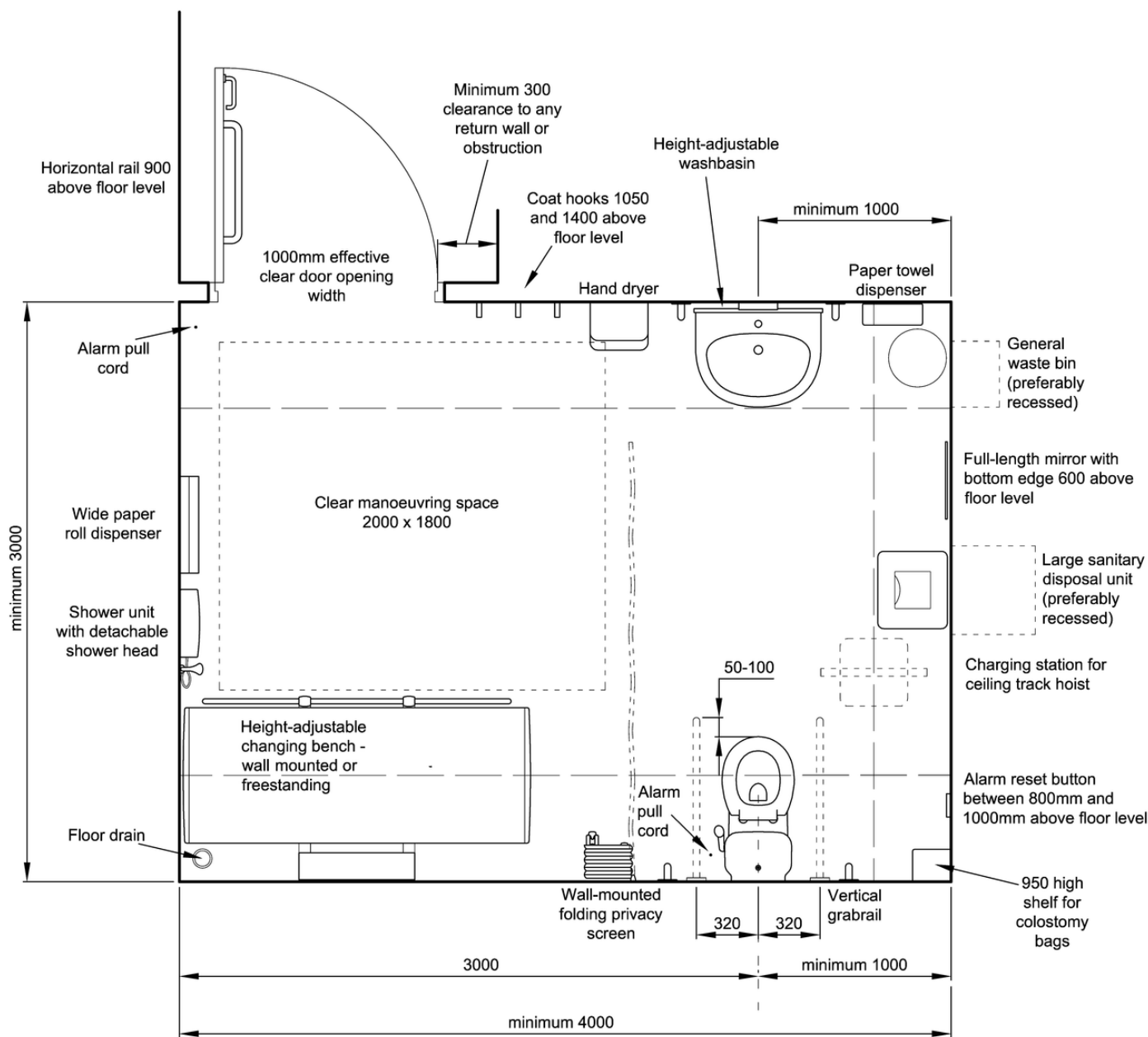


# Example Floor Plans

# Example Floor Plan Layout

BS8003-2:2018 Changing Places facility

- Corner door layout
- Suitable for wall-mounted or freestanding changing bench
- Ceiling track hoist with full room coverage

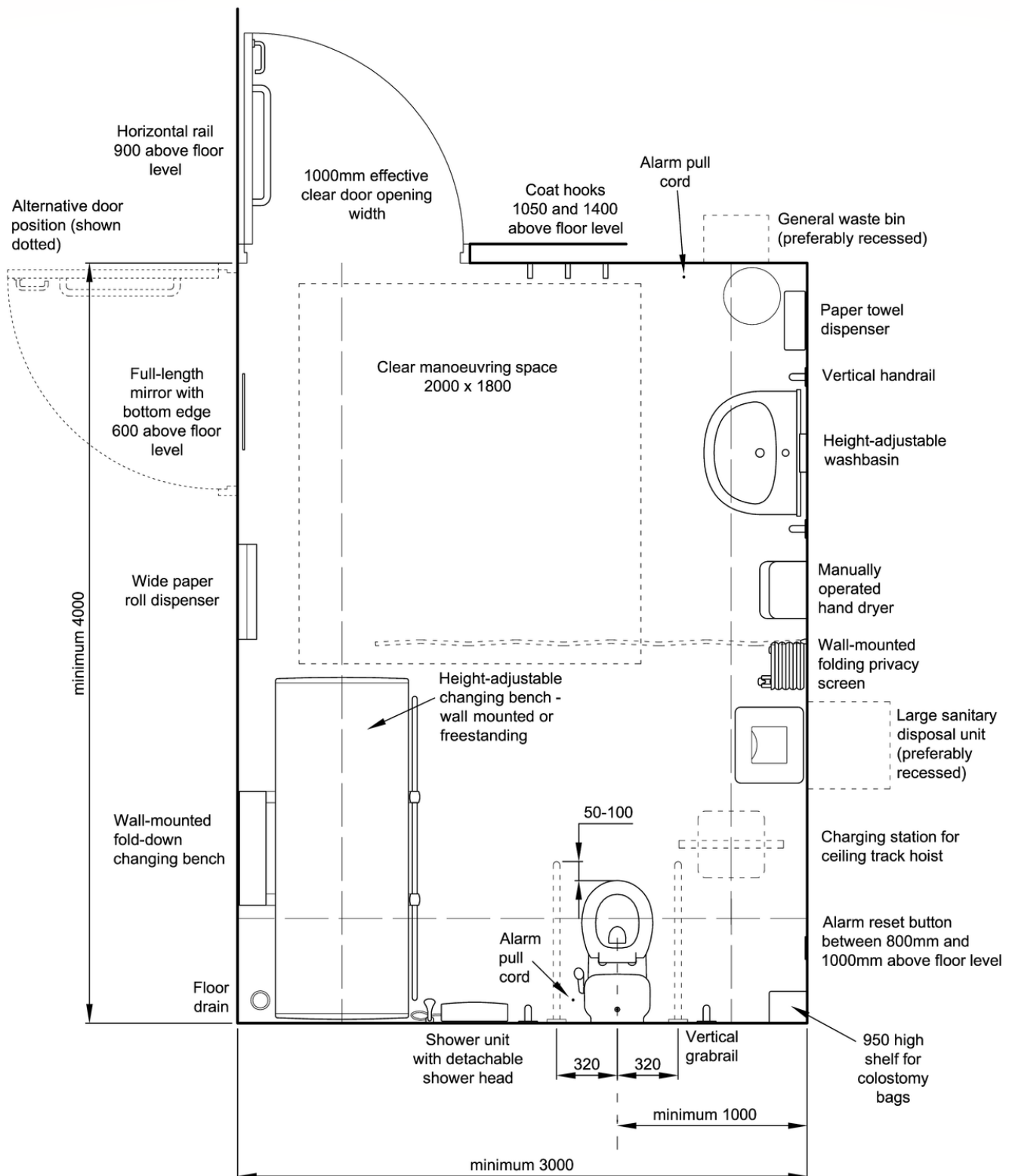


All dimensions in millimetres

# Example Alternative Floor Plan

Alternative design of a BS8003-2:2018 Changing Places facility

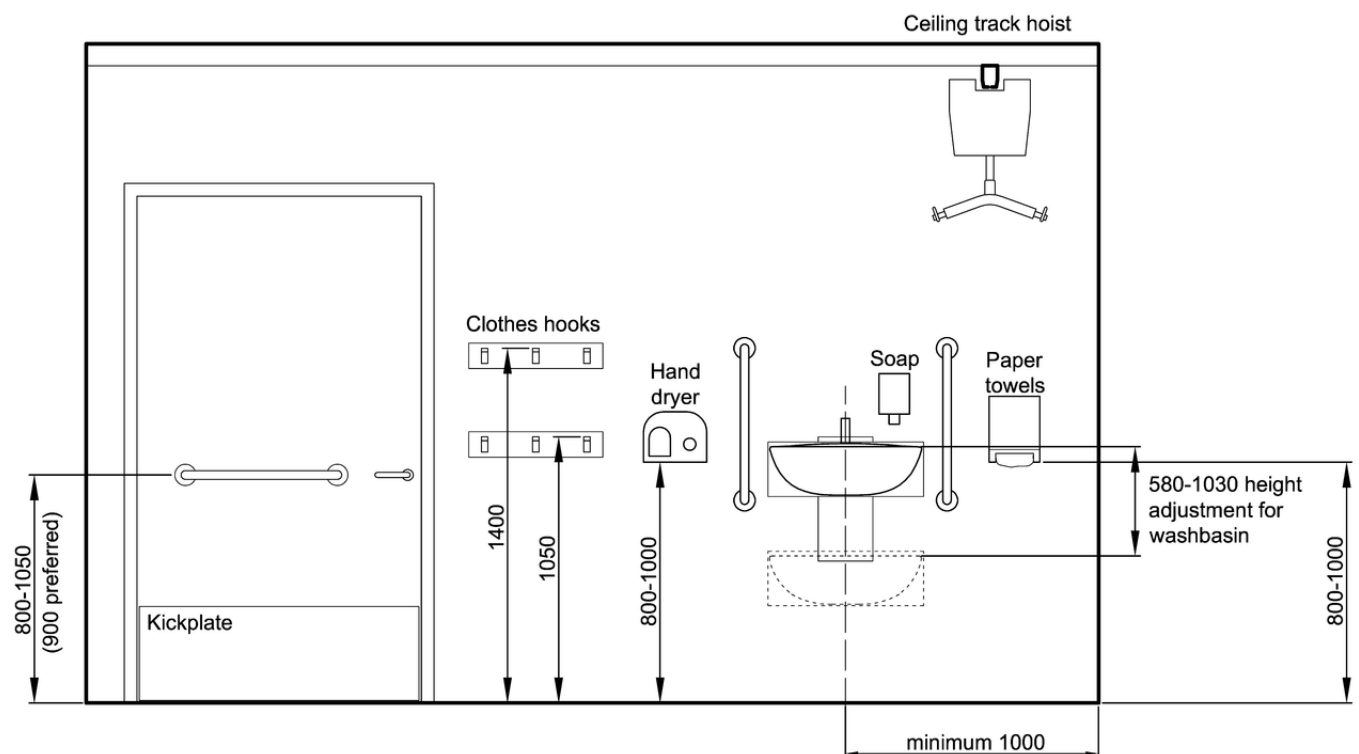
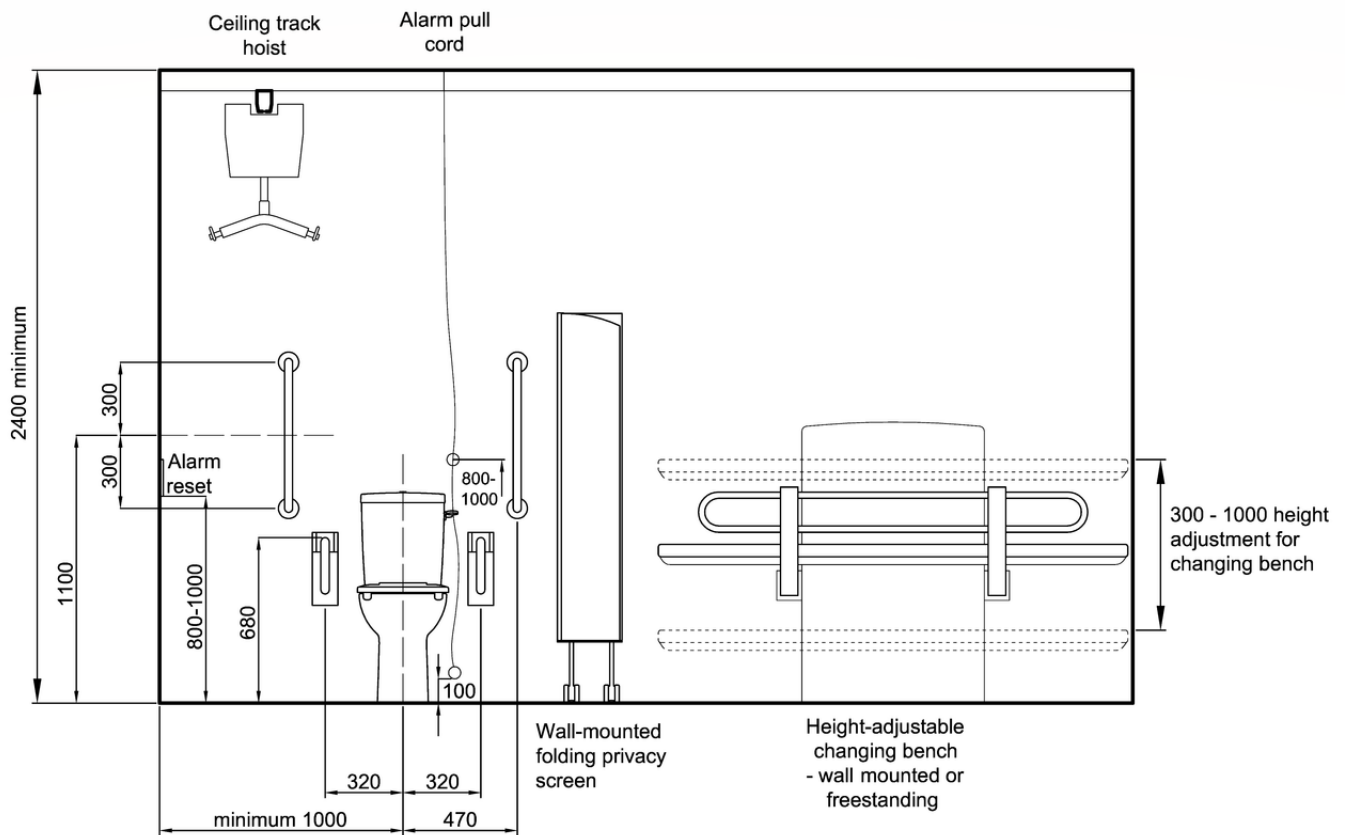
- Corner door layout
- Suitable for wall-mounted or freestanding changing bench
- Ceiling track hoist with full room coverage



All dimensions in millimetres

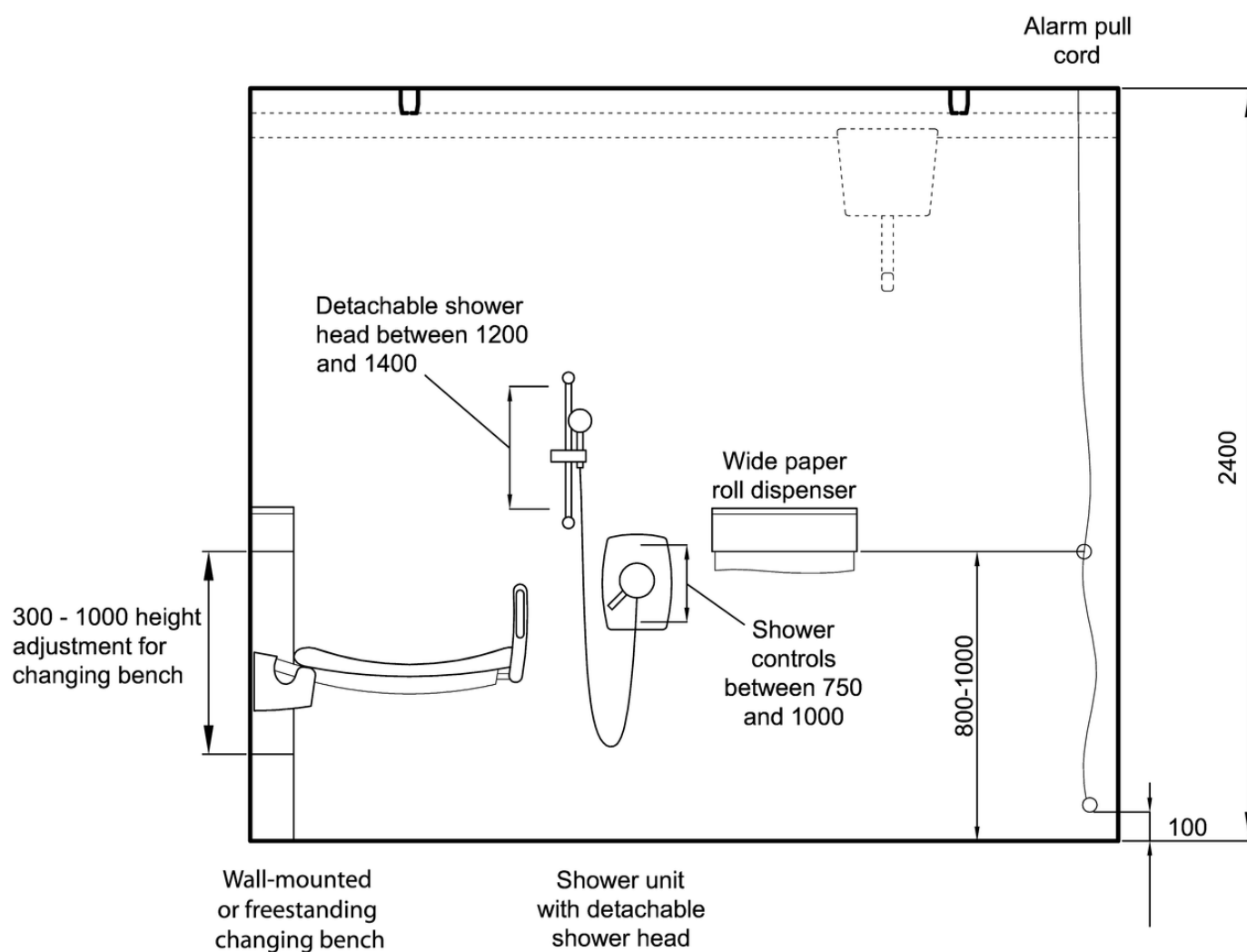


# Recommended Heights For Fittings



All dimensions in millimetres

# Recommended Heights For Shower Area



All dimensions in millimetres



# Management and Training



# Management Plan & Training

An effective management plan is essential for day to day operation and ongoing viability. Good management involves the provision of relevant staff training, effective and appropriate communication. Regular cleaning and servicing are also a requirement.

Good practice in management and maintenance will safeguard the providers of the Changing Places by demonstrating that risks are well managed. Keeping accurate records of daily activities such as cleaning and equipment inspections, and of annual servicing of hoists and benches will provide evidence of good management.

In a Changing Places toilet used predominantly by visitors, assistants are less likely to be familiar with items of equipment or individual controls. Providing clearly visible instructions that are easy to follow, and frequent checks by management staff between users, such as checking that the hoist is returned to the charging station, will ensure that equipment is ready for the next user.

## Staff Training

Providing staff who manage a Changing Places toilet with disability awareness training and an understanding of how people use the equipment is very important. However, staff are not expected to provide personal assistance to people using the facility. It is also worth re-iterating at this point that the providers of a Changing Places should not be required to supply slings for use with the ceiling track hoist. Slings are specific and individual to users.

Familiarisation of a new Changing Places facility and its equipment will ensure staff members are aware of responsibilities relating to its management. Disability awareness training should be supplemented with training on why people need Changing Places toilets and how they are used.

# Management Plan & Training

Basic training such as safely returning the hoist motor to the charging station, and recognising the controls for release and power cord, enable staff to answer basic queries.

Cleaning and caretaking staff should understand the importance of meticulous hygiene and why the position of items within the room is critical. For example if an alarm pull cord is tied up, it will not be possible for a user to reach it from the floor in an emergency. A contingency plan in the event of product failure or power cut should be drafted.

## Information

The venue website and other informational resources should make specific reference to the Changing Places facility. It's important to advertise Changing Places facilities to potential users at the venue itself, and staff should be trained so that they can direct visitors to the facility.

Information should be readily accessible and up-to-date; including location, opening times, access and security arrangements, equipment and hoist sling compatibility. Use of the Changing Places facility should be monitored. Customer feedback should be encouraged and dialogue with users established. This will enable organisations to better meet the needs of users.

Care to ensure the following elements are operational is essential:

- Clear access - no obstructions along route
- Signage - unobscured
- Doors and Locking mechanisms – operating freely
- Assistance & Fire alarms – tested to ensure fully operational
- Heating and lighting – working satisfactorily



S.Y-N-C  
LIVING

# Product Data Sheets





# Nivano Changing Table

Durable paediatric to adult height adjustable changing table with fixed padded top and comes in stretcher sizes of 1200mm to 1900mm x 700mm.

**Area of Use:** Suitable for wet areas

**Material:** Part Stainless Steel Construction

**Weight Capacity:** 220kg

**Colours:** White

**Compliance:** Changing Places Specification

**Options:**

- 150kg & 220kg weight capacity available
- Bed sizes from 1200-1900 x 700mm
- Special sizes available to order
- Fold away guard
- Protective padded guard bumper
- Removable Mattress
- Special fully coloured models available

When not in use, the Nivano folds away very neatly and securely protruding just 220mm from the wall maximising the space in the room.

The Nivano wall mounted disabled changing bench has a travel range of 700mm (200mm to 900mm). It can easily lift a client from near floor level to a convenient working height for dressing and changing at the touch of a handset button, reducing the risk of back strain.



## Pressalit 3000 Changing Table

The stylish design combines with optimal comfort for both user and carer. The adjustment height is 700mm, controlled by a wired hand control.

---

### Sizes Available:

1910mm Length Bench x 798mm Wide

1410mm Length Bench x 798mm Wide

### Colours Available:

Graphite grey

Sapphire blue

### Features:

- Safe working load and lifting capacity of 200kg.
- Height adjustment of 700mm; from 300mm to 1000mm
- Easy to clean, smooth contact surfaces
- Water collection tray with integrated water outlet prevents water from splashing on carers or the floor
- Slightly curved form makes the table extremely comfortable and safe
- Ergonomically designed safety rails
- Mains connection 230 V
- Integrated gas cylinders enable table to be folded away when not in use



# Therapy Hygiene Table

These variable height tables provide not only a low transfer height but quick and simple adjustment to the correct height for changing procedures, reducing back and postural problems for support staff.

## Sizes Available:

186cm x 65cm

152cm x 65cm

130cm x 65cm

## Options Available:

Hydraulic with retractable wheels

Electric with retractable wheels

Hydraulic with central locking castors

Electric with central locking castors

## Features:

- Safe working load and lifting capacity of 240kg (528lbs)
- Height adjustment 41cm to 94cm
- Lifetime frame warranty
- Clearance beneath frame for mobile hoist
- Optional side support rails and cushions available





# Shower Trolley

Designed to provide transport to and from the showering area, these mobile hydraulic Shower Trolley's feature a foam padded PVC liner for added patient comfort, a linked wheel system with central locking and steering facility, as well as fold down side support rails for patient transfer.

### Sizes Available:

Standard 195cm x 74cm

Junior 160cm x 74cm

### Options Available:

Standard hydraulic

Standard electric rechargeable battery

Junior hydraulic

Junior electric rechargeable battery

### Features:

- Safe working load and lifting capacity of 240kg (528lbs)
- Hydraulic height adjustment 41cm to 94cm via foot pedal
- Rechargeable battery models 41cm to 94cm via hand switch
- Large wheel design, with central locking and steering facility
- Supplied with foam padded PVC patient support cushion

- Battery operated models include a spare battery pack and charging unit
- Foam padded PVC liner with side supports and end panels for comfort and security
- The side support rails fold down to assist patient transfer
- Low gradient tilt towards foot end for water drainage via integral waste outlet
- Plug and drain hose supplied complete with storage bracket
- Bumpers fitted to all corners for protection during transport procedures
- Bumpers can be removed to reduce the width to 65cm to access tight doorways
- Lowers to wheelchair height for ease of patient transfer
- Purpose made precision bearings
- Clearance beneath frame for mobile hoist



## ABW6 Height Adjustable Wash Basin

With a 450mm height range and large basin surround, the ABW6 wash basin is suitable for wheelchair users and those who need extra support to move from sitting to standing.

**Height Range:** 450mm (580mm - 1030mm)

**Colours:** White or Aqua

**Operation:** Handset control, large level taps, and infra-red touch free taps

**Dimensions:**

- Width 750mm or 900mm options
- Depth from wall 700mm
- Height range 580mm - 1030mm

**Safety Features:**

- Battery backup
- Anti-trap safety cut-out
- Enclosed plumbing

**Features:**

- Large lever taps to help with limited movement
- LED strip light with large mirror
- Large ergonomic basin surround
- Easy to use handset and shaver socket
- Suitable for wheelchair users and those who need extra support to move from sitting to standing
- Light weight, durable, heat resistant Corian material construction which is never cold to touch
- Large integrated mirror which adjusts in height with the basin



## R4950 Height Adjustable Wash Basin

Powered wash basin lifter with 300mm height adjustable with a user-friendly lever control. Adapts to the progressive needs of individuals

**Height Range:** 300mm (670mm to 970mm)

**Colours:** White, Green, Anthracite Grey

**Dimensions:**

- Width 666mm
- Height min 750mm
- Lever depth from wall 390mm

**Wash Basins to be used with:**

- Pressalit Matrix Curve
- Pressalit Curve II
- Pressalit Matrix Small

**Features:**

- Powered wash basin lifter
- Concealed plumbing
- 300 mm height adjustable (670mm to 970 mm)
- Lever control
- Materials: Anodised aluminium and polystyrene (PS)





## Geberit Mera Care Toilet

The Geberit AquaClean Mera Care toilet provides the user with a simple to use shower, drying and air purifying operation allowing for a cleaner and more hygienic experience that is virtually hands-free.

**Weight Capacity:** 150kg

**Colour:** White

**Voltage:** 230 V AC

**Power Consumption:** 2000W

**Dimensions:**

- Seat Height Adjustable 44cm - 56cm
- Width 40cm
- Depth 59cm

**Features:**

- Individually adjustable spray settings
- Oscillating spray arm
- Free of charge five year warranty
- Automatic flushing via user detection
- Flush actuation from remote control
- Warm air-dryer
- Programmable user profiles
- Continuous flow heater for constant warm water
- Easy to install, even in wet rooms



# Comfort Height Toilet

Comfort Height Toilets are designed to make life a bit easier by giving an extra 2 inches of height to the toilet. This relieves the user of pressure on knees and joints when getting on and off the toilet, with a higher and less demanding seating position.

**Colour:** White

**Material:** Acrylic

**Dimensions:**

- Seat Height 465mm
- Width 360mm
- Depth 655mm

**Features:**

- Push button to flush
- Ceramic white finish
- Seating position of 465mm / 18 inches
- Close coupled cistern



# Freeway Ceiling Track Hoist

The Freeway TransactiveXtra benefits from a low profile design which is unobtrusive yet provides a much greater lifting height than other hoist options.

**Weight Capacity:** 200kg

**Colour:** White

**Hoist Range:** Up to 2080mm

**Performance:** 30 - 40 lifts at 270kg

**Dimensions:**

- Height From Ceiling: 356mm
- Hoist Range: 2080mm
- Overall Height Range: 2436mm

**Adjustability:**

Freewheel, powered traverse and X-Y option for complete room coverage, models compatible with powered and manual turntables.

**Safety:**

Emergency stop and emergency lowering, manual lowering & raising facility.

**Features:**

Provides the caregiver with increased access to the client making their job safer and making the transfer more comfortable for the client.

- Ergonomically designed handset
- Compatible with a range of slings
- Freeway spreader bar as standard
- Simple to recharge
- Mains power





## Lift and Lock Hinged Rail

Drop-down support rail that can be fixed either side of the peninsular toilet, to offer support to people while transferring and while seated. Dark coloured rails give greater contrast against light coloured walls, which are easier to see for visually impaired users.

### Sizes Available:

650mm Length

800mm Length

### Dimensions (all sizes):

Tube diameter 32mm

Height 185mm

### Colours Available:

Dark blue

Dark grey

Grey

Stainless steel polished

Stainless steel satin

White

### Features:

- Max load 135kg
- Lift & lock hinge mechanism
- Non-corrosive stainless steel construction
- Doc M compliant



# Stainless Steel Grab Rail

Grab rails provide support for people with limited power and mobility, and boost independence and safety for users. Dark coloured rails give greater contrast against light coloured walls, and are to see for the visually impaired.

---

## Sizes Available:

300mm Length  
450mm Length  
600mm Length  
900mm Length

## Dimensions (all sizes):

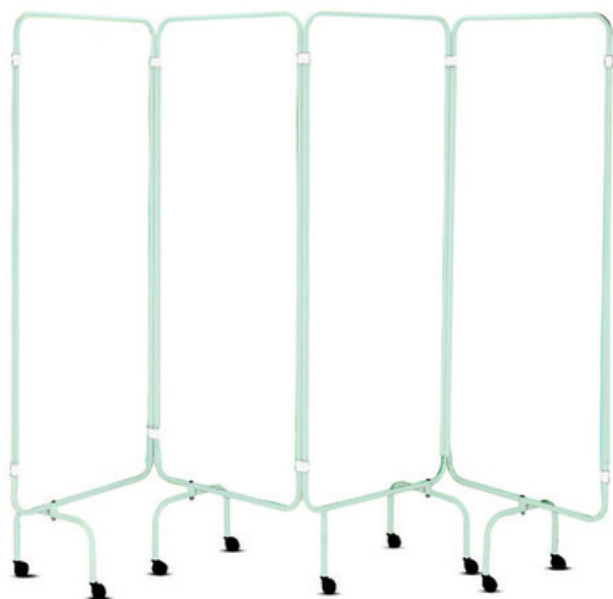
Tube diameter 35mm  
Projection from wall 90mm

## Colours Available:

Dark blue  
Dark grey  
Grey  
White

## Features:

- Max load 185kg
- Concealed fixings
- Non-corrosive stainless steel construction
- Doc M compliant



## Mobile Privacy Screen

This freestanding privacy screen is designed to provide a modern alternative to the traditional plastic and polyester screen curtains. This retractable privacy screen is easy to move, and can be positioned between the toilet and the rest of the room.

---

### Dimensions:

Height 172cm

Width closed 61.5cm

Width extended 245cm

### Colours Available:

Blue

White

### Features:

- Fire retardant plastic panels
- Easy to clean
- 4 panels that can be folded and extended as necessary
- Screen panels are mounted on castors, for easy movement.





## Wall Mounted Privacy Screen

Fixed to the wall, this mounted screen provides maximum privacy when extended, and takes up minimum space when folded away. The Formica laminate panel skin is one of the most durable screen panels currently on the market, designed to withstand day to day knocks.

### Dimensions:

Height 1800mm

Width extended 1800mm (six panel)

Depth 28mm

Patterns available as optional extra

### Features:

- Easy clean panels, handle and hinges
- No track or rails for entanglement
- Easy fold panels for compact storage
- Ideal for public and hygienic spaces
- Durable panels to withstand knocks
- Water resistant and corrosion free
- 1.5mm Formica laminate panel skin
- Can withstand heat up to 180°C
- Medical grade stainless steel
- Anti corrode lockable castors



# Triton Elina TMV3 Mixer Shower

An inclusively designed, TMV3 approved thermostatic bar mixer shower with easy to grip and control, tamper proof looped lever controls and clear flow and temperature markings for ease of use for all users with varying needs and abilities.

**Finish Colour:** Chrome

**Temperature Control:** Thermostatic

**Max Running Pressure:** 5 bar

**Min Running Pressure:** 0.1 bar

**Max Temperature Stop:** Yes

**Dimensions:**

- Hose length: 2m
- Shower head diameter: 110mm
- Shower rail length: 940mm

**Installation:**

- Suitable for all plumbing systems
- Inlet connections: 1/2" BSP to 3/4" flat face union

**Approvals:**

Complies with: BS EN 1111, 1287 :  
WRAS, TMV3 Approved

**Features:**

- Stylish, sleek and robust
- Separate flow and temperature controls
- Tamper-proof lever controls
- Automatic shutdown if hot and cold supplies fail
- Simple to install and maintain
- Factory set maximum temperature at 38°C



## Hand Dryer

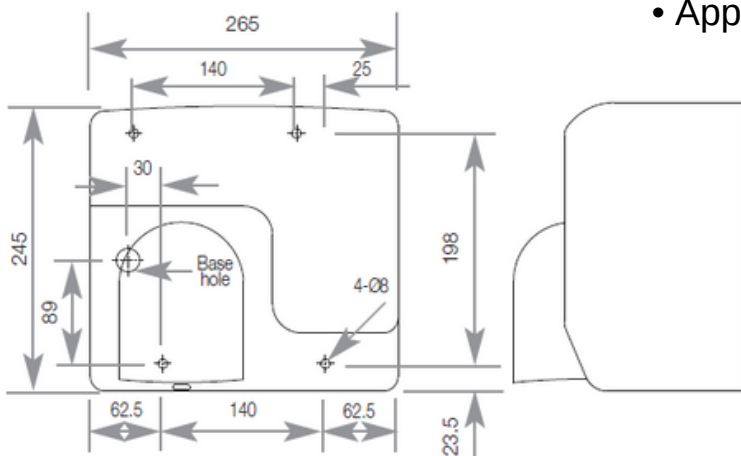
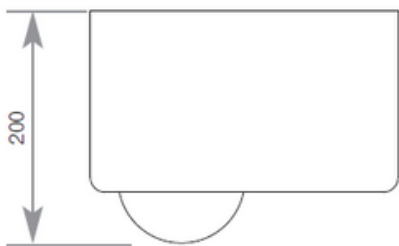
This hand dryer is motion activated via the infra-red sensor - no touch is required. It has a durable metal construction built to be vandal resistant. The nozzle revolves 360° for dynamic use.

### Dimensions:

Height 245mm

Width 265mm

Projection 155mm



### Features:

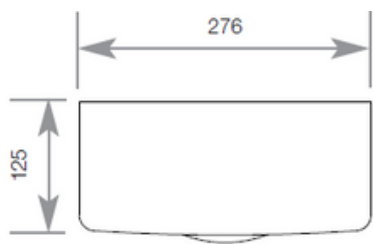
- Infra-red sensor – no touch
- Rated power: 2500w (10.8A)
- IPX1 rated
- Class 1 rated isolation
- Sound level:  $85 \pm 3$  db
- 360° revolving nozzle
- Durable metal construction
- Voltage: 220/240v (50Hz)
- Air movement volume: 270m<sup>3</sup>/hour
- 60 seconds auto shut off
- Approximately 20-25 second dry time



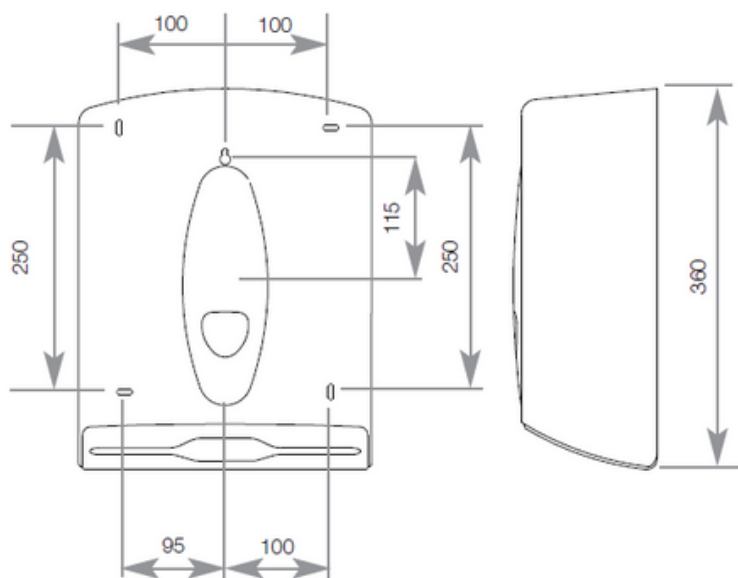


# Paper Towel Dispenser

This paper towel dispenser is lockable, with a high impact cover. It has a capacity of 400 paper towels, with a maximum paper towel size of 255mm x 120mm.



**Dimensions:**  
Height 360mm  
Width 276mm  
Projection 125mm





## Colostomy Bag Shelf

Designed for temporary placement of colostomy bags and other small items. Tough burn-resistant surface, that has been UV stabilised to prevent discolouration.

---

### Dimensions:

Length 595mm

Width 135mm

Height 75mm

### Features:

- Anti-microbial duraplast construction
- UV stabilised to prevent discolouration
- Doc M compliant



## Couch Roll Dispenser

A couch roll dispenser that is lockable and surface mounted. The serrated edge provides quick and easy dispensing of hygienic couch rolls.

---

### Dimensions:

Width 540mm

Height 158mm

Projection from wall 167mm

### Features:

- White colour
- Serrated edges
- Durable construction
- Lockable
- Surface mounted



# Automatic Soap Dispenser

An automatic soap dispenser that is touch free, for a hygienic delivery of antibacterial hand soap or sanitiser.

## Dimensions:

Width 119mm

Height 276mm

Projection from wall 115mm

## Features:

- Constructed from high-grade ABS plastic
- Compatible with all Excel soaps and pump types
- Cartridge refills
- Touchless operation
- Lockable
- Takes 4x C batteries
- Low battery LED indicator light
- 50,000 operation battery life
- Sensor tested to 1 million activations





## What Changing Places mean to Sharon & Aliya

There's no better way to show how Changing Places can make a real difference, than sharing the experience of Sharon and her daughter Aliya. Their life has significantly changed since more and more Changing Places toilets have been installed in public buildings. In Sharon's words;

"For Aliya, it is a matter of safety and dignity. In a Changing Places toilet, **she feels more independent** since she is able to wash her hands on her own thanks to the height-adjustable wash hand basin. It is something really simple, but **it means a lot to her.**"

"The difference that a Changing Places toilet can make in our lives is beyond unbelievable. We don't cut our days out short anymore.

**I don't have to change her on filthy floors** and we don't have to rush home to use our own bathroom."

"We gained  
more freedom,  
independence  
and dignity."







Sync Living is a leading supplier of Changing Places equipment for both public and private buildings. From our showroom in Belfast, we supply products and services right across Northern Ireland and Ireland.

Founded in 1996, Sync Living is passionate about optimising the lives of people with impaired mobility. Through supplying high quality specialist living equipment and solutions, we help people live with freedom and independence.

**Visit [SyncLiving.co.uk](https://SyncLiving.co.uk) today**



## Service You Can Trust

Our friendly and knowledgeable team will help you with any queries you may have.



## Quick and Easy Ordering

Simply place your order over the phone or pop into our showroom.



## Rapid Delivery

Our excellent delivery networks ensure that your products arrive safely on time.

## Read our reviews online





# We're Here To Help



Unit 3  
1 York Road  
Belfast  
BT15 3GU



028 9074 5333



Sales@syncliving.co.uk



SyncLiving.co.uk

# S-Y-N-C

L I V I N G

